

An aerial photograph of a dense forest of evergreen trees, likely spruce or fir, showing a rich green canopy with some darker shadows between the trees. The perspective is from directly above, looking down on the forest floor.

Solör Bioenergi
Landvetter

Agenda

- • Solör
- • Environment
- • Fuel – Landvetter
- • Future

Vision & Business Concept

VISION

Solör Bioenergy aims to be a leading supplier of renewable energy based on forest fuels.

Business Concept:

Solör Bioenergy shall be local, long-term, reliable in delivery, and profitable, creating a resilient and sustainable future.

The business shall contribute positively to the environment, customers, partners, local communities, employees, and owners.

Growth will take place organically and through acquisitions.



Heat for the Nordic Region

Over 600,000 daily users in 82 municipalities

1500

km district heating pipelines

4

environmental terminals

5

pellet factories

>3,6

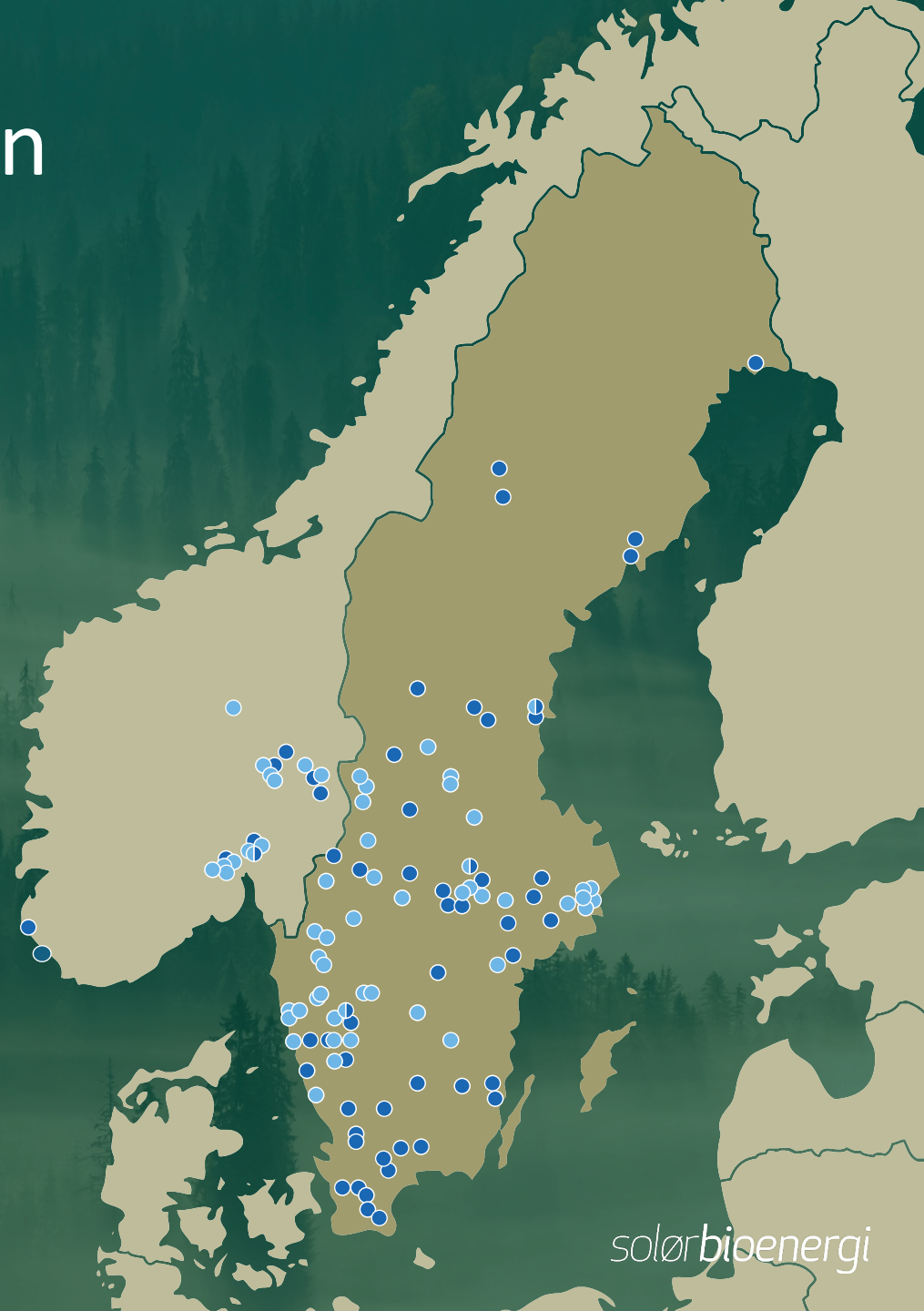
TWh total energy delivery

175

local heating plants

110

district heating plants



Strong Local Presence

Solör delivers district heating to more than eighty locations across Sweden.



Each region has local expertise ready to respond quickly.



We prioritize locally sourced renewable energy over import-dependent solutions.



Overview of Historical Milestones

2003

Solör was founded in 2003 through the acquisition of a briquette factory in Kirkenær, Norway.

2010-2011

The first investment in Sweden was made through the acquisition of Charlottenberg (2010) and Svenljunga (2011).

2013-2014

The expansion continued with the acquisition of Rindi Energi (2013) and 28 facilities from E.ON (2014).

2018-2021

Major acquisitions were carried out through Pemco Energi in 2018, four facilities from Veolia in 2019, six facilities from Vasa Värme in 2020, as well as Falbygdens Energi and Veolia Utility Solutions in 2021, including Strängnäs District Heating.

2022

Solör continues to grow through, among other things, the acquisition of Ale District Heating AB and the acquisition of Lantmännen Agrovärme.

Idag

We continue to develop through local investments across the country, growing both organically and through acquisitions.

2025

Åkersberga

Vallentuna

Mullsjö

Business Group SOLÖR

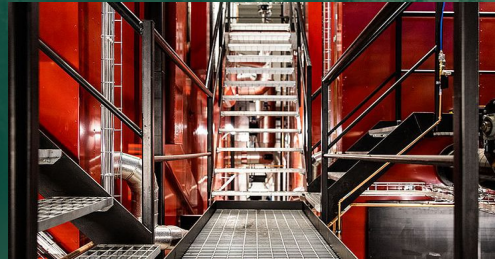
1

Multi-million investments in dust filters



2

From normal to exceptional times



3

Solör Bioenergy invests in the energy infrastructure of the future



4

Solör gains increased trust to deliver district heating to Vårgårda IK

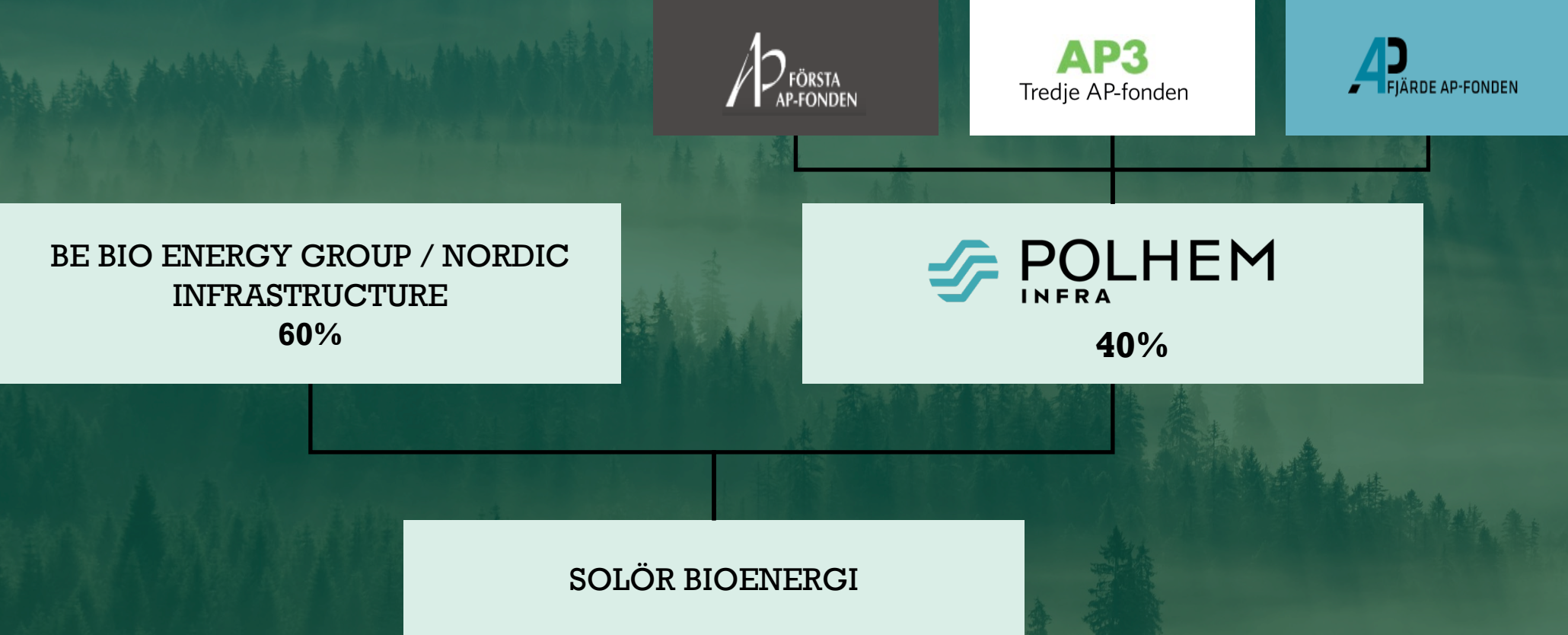


Solör's Service Areas

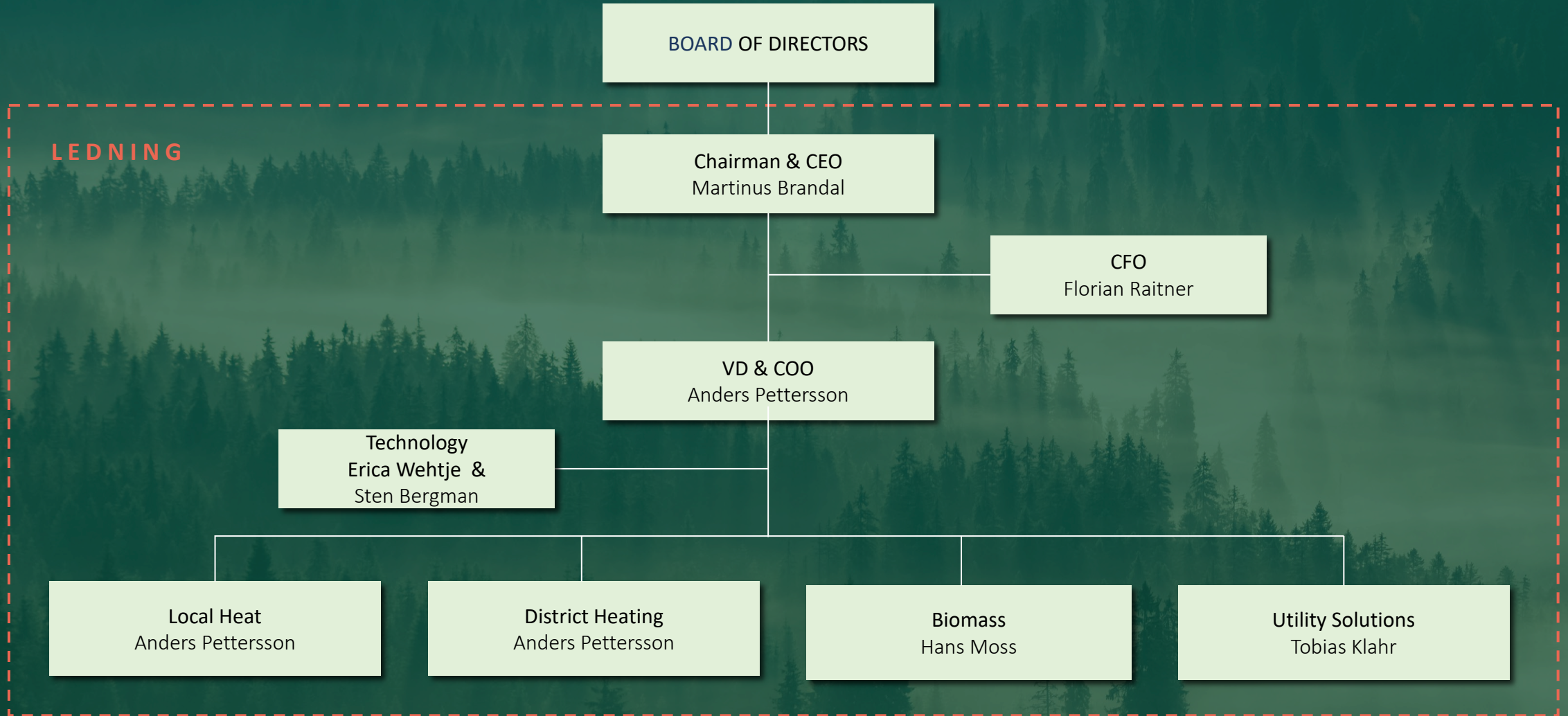
Everything we do is united by a common purpose – to deliver reliable and sustainable solutions using renewable resources within energy, water, and heat.



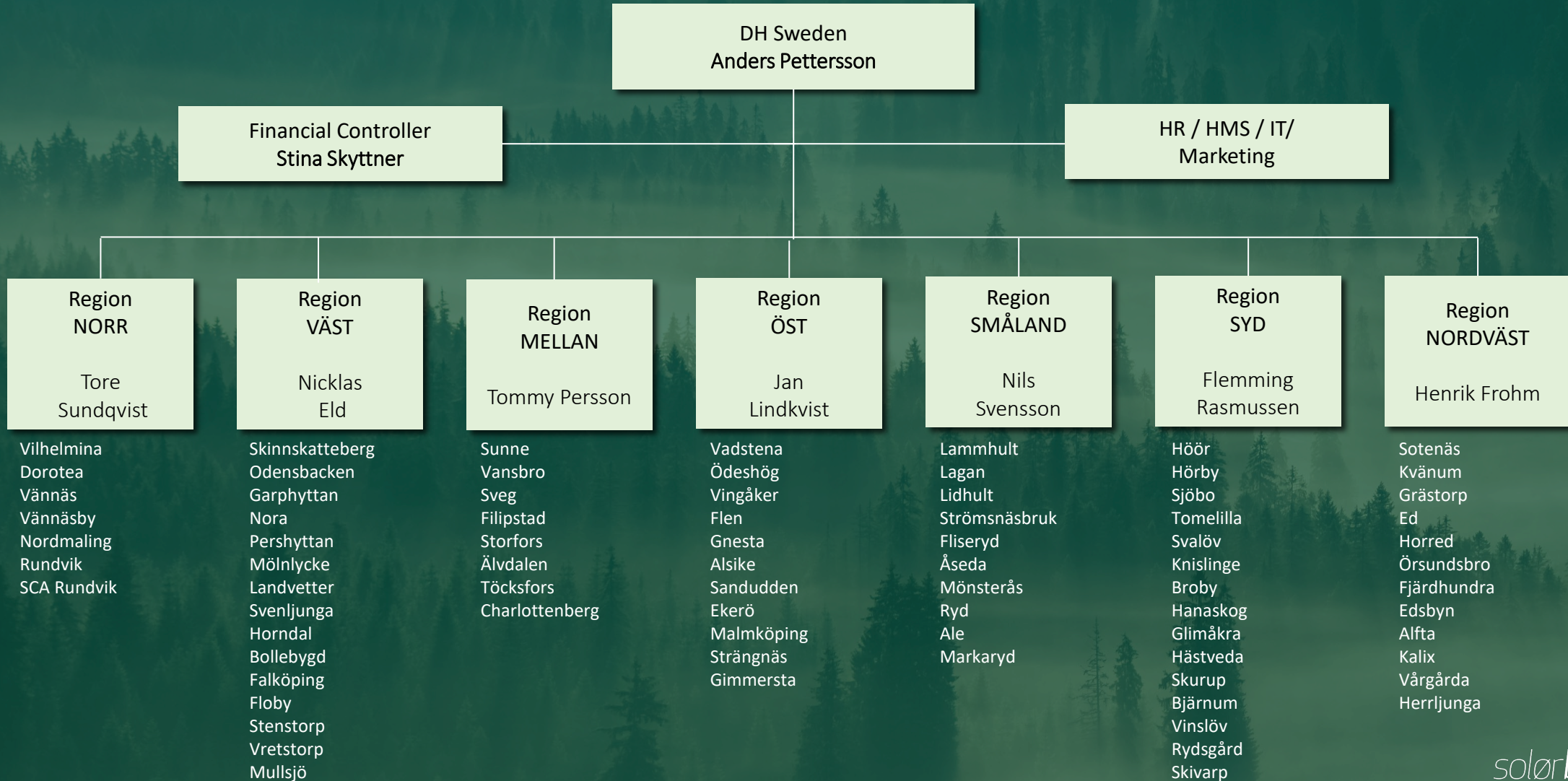
Ownership 2026



ORGANISATION

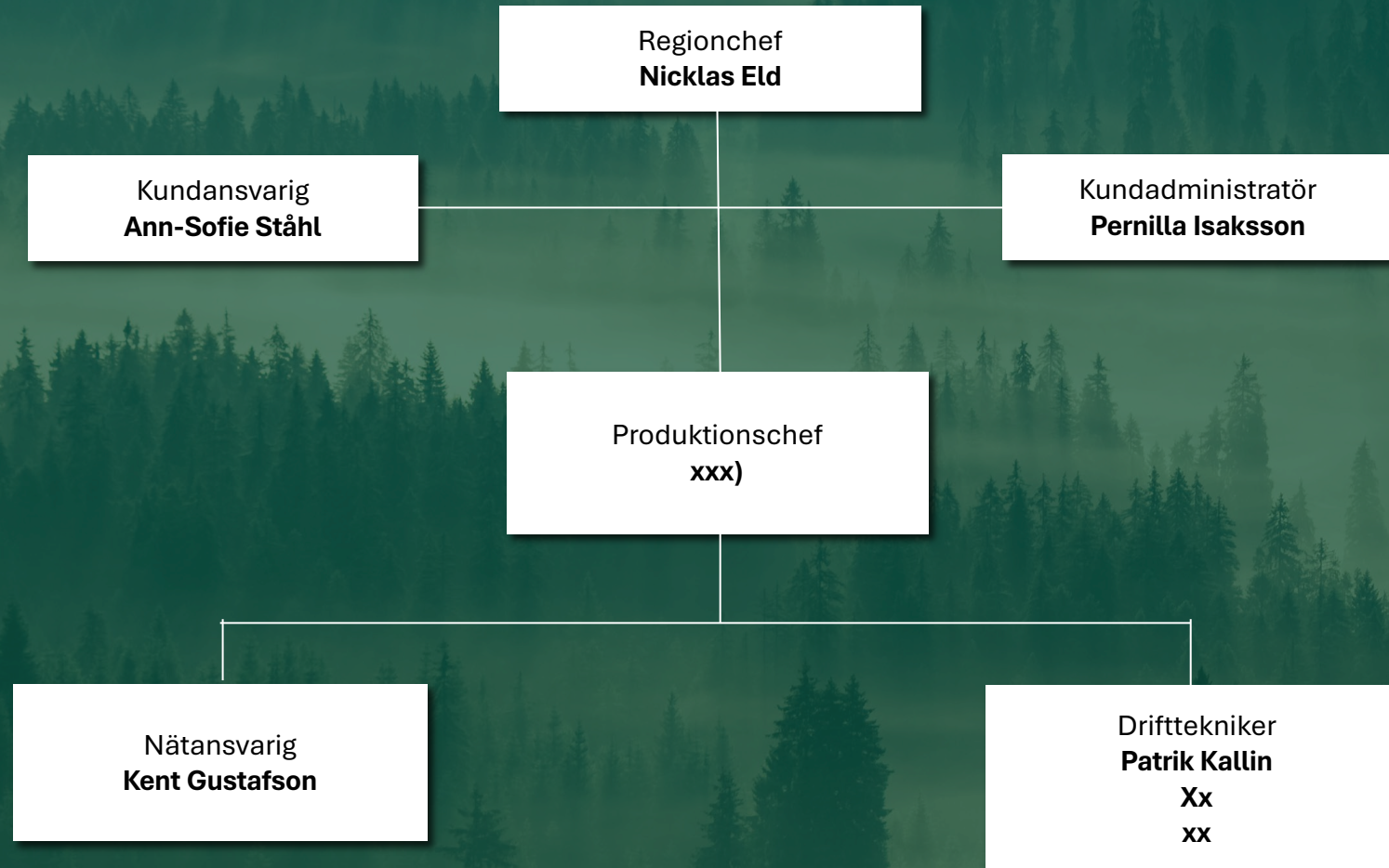


Business Area – District Heating Sweden




Driftorganisation 2026

Mölnlycke – Landvetter - Bollebygd



Landvetter – Key Facts

- 
- Approx. 15 GWh/year sold
 - 284 total connections (241 single-family houses)
 - 12 km district heating pipeline
 - Network built around 2004
 - 4.5 MW biomass boiler
 - 5 MW oil boiler

Fuel History – Landvetter



- Briquettes since 2014
- Wood chips / sawdust 2023–2024
- Pellets from 2024

District Heating netmap Landvetter



Framtid Landvetter

- 9,223 inhabitants

Landvetter is a growing residential area due to its proximity to Gothenburg and the international airport.

A new southern district, 'Landvetter South', is planned with the ambition to create a sustainable city with at least 25,000 inhabitants.

