



Gunilla Pettersson

# Moelvens pellets startup and integration to the sawmill

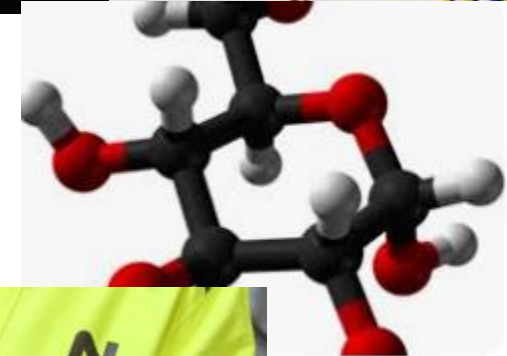
Moelven Pellets AB - Karlskoga

04.02.2025



# This is me!

- Master degree – automation
- 20 years in production
- Explosives - detonators and gunpowder
- Forging – truck beams and crankshafts
- Chemical – drug substances/molecules - new products
- Biomass business – Pellets producer in Sweden



# Moelven Industrier ASA

**Fellestjenester:** Økonomi | Finans/Forlikring | Kommunikasjon | HR | IKT

**Råvareforsyning | Fiber | Bioenergi:** Moelven Skog AB | Moelven Virke AS | Moelven Bioenergi AS | Moelven Pellets AS | Vänerbränsle AB (82,3%)

**Divisjonsledelse:** Divisjon Timber | Divisjon Wood | Divisjon Byggsystemer

## Divisjon Timber

Moelven Dalaträ AB

Moelven Løten AS

Moelven Notnäs Ransby AB

Moelven Numedal AS

Moelven Årjäng Såg AB

Moelven Mjøsbruket AS

Moelven Valåsen AB

Moelven Våler AS

Moelven Component AB

Moelven Profil AS

UJ-Trading AB

Moelven UK Ltd.  
Moelven Deutschland GmbH  
Moelven Export Sales AB

## Divisjon Wood

Moelven Wood AS  
Moelven Wood AB  
Moelven Danmark Sales A/S

Moelven Wood Prosjekt AS

Moelven Sør-Tre AS

Moelven Valåsen Wood AB

Moelven Granvin Bruk AS (99,3%)

Moelven Edanesågen AB

Moelven Soknabruket AS

Moelven List AB

Moelven Trysil AS

Moelven Wood Interiør AB

Moelven Van Severen AS

Moelven Vänerply AB

Moelven Treinteriør AS

Moelven Lovene AB

Moelven Eidsvoll AS

Moelven Langmoen AS

Moelven Østerdalsbruket AS

## Divisjon Byggsystemer

Moelven Byggmodul AB

Moelven Byggmodul AS

Moelven Töreboda AB

Moelven Limtre AS

Moelven Modus AS

# Valåsen investments 2024 - 2025

- Moelven Valåsen is our largest sawmill measured in terms of capacity and turnover, the first step on our trip was to digitalize the production process. The aim with the second step is to make the sawmill more efficient, sustainable and profitable. We will increase the production from ca 350 000 m<sup>3</sup> to 500 000 m<sup>3</sup>. Together with Edanesågens investment it's totally over 900 MSEK, Valåsens investment are 382 MSEK
- Decided investments :
  - A new energy centre
  - A new saw intake, raw sorting and sorting with camera technology
  - A new saw line for small timber.
  - A new pellet plant that use the residual raw materials from the Moelvens sawmills operations. Designed for 80 000 tons/year, prepared for increasing

# Why? – It's important for Moelven to use the wood to its fullest.

- Moelven Valåsen is a large sawmill and there is large volumes that don't become timber. The Pellet plant will use 192 000 ton of that.
- By starting a pellet production, we increase the value of Valåsens residual raw materials. We create a highly sustainable and profitable way to manage the materials.
- To get even more sustainability we make sure that more than half of the pellets are transported 100 km on the roads on Swedish ground before it goes by boat to continental Europe.



# Important areas in the Pellet project

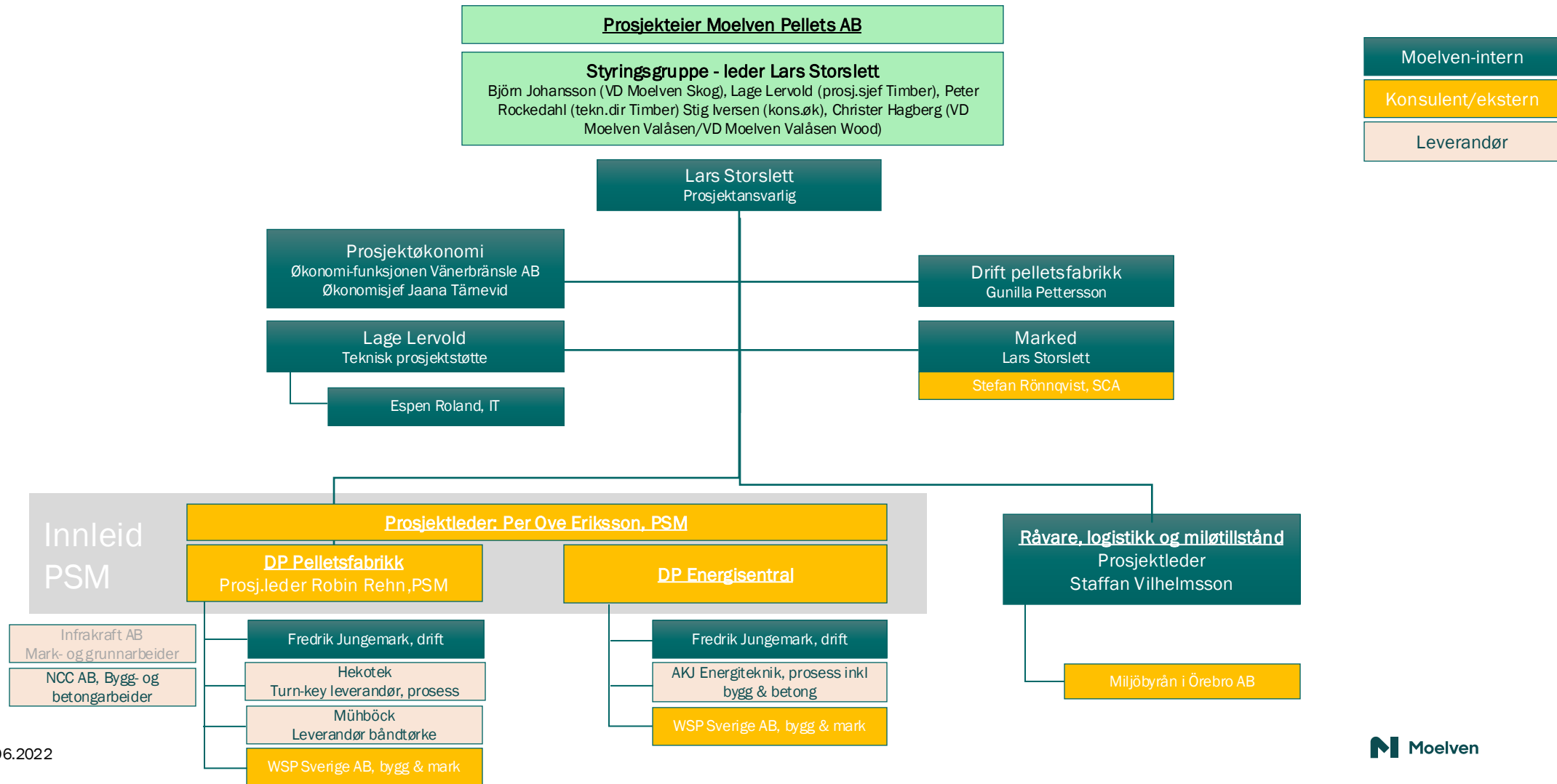
- Use the experience and suggested improvements from Pellets AS
- Noise reduction inside/outside, we are close to neighbours
- Reduce the emissions from the 12 MW Boiler and pH adjust the condensate water from the drier
- Prepare for increasing the capacity in the future
- Availability – reliable equipment and easy to maintain
- Quality – ENplus A1 quality after 100% test
- Reduce and reuse the thermal energy
- Fire protection system – Firefly and fire alarms
- Reuse the rejected pellets/fines from pelletizing process in the boilers for making steam to the presses and heat up the inside temperature
- Cost effective logistic of raw material and pellets



# Integration

- Reduce the transports – balance the production based on Valåsens budget. Valåsen produces both spruce and pine sawn timber.
- Reduce the costs for maintenance – prioritization between companies?
- Education and other training sessions
- Emergency situations – more resources available 24 h
- Pellets 12 MW boiler are handled by Valåsen, daily communication
- Safety, environment and emissions
- Sprinkler system – the same system
- Water pipes and electricity
- HR resource – competence, recruitment, unions, plans for educations, health ...
- Economy resource

# Project organisation



# Project manager/Site manager - project 2022-2024

## PROJECT MANAGER:

- Overall safety and security responsible during the project, higher standard than Moelven. No injuries during the project
- Communications with authorities and neighbours early in the project
- Contracts and costs towards all the entrepreneurs.
- Timetable – started up the trial period exactly on time – September 2024
- Started up the integration with Valåsen from the beginning – boiler, sprinkler and energy centre

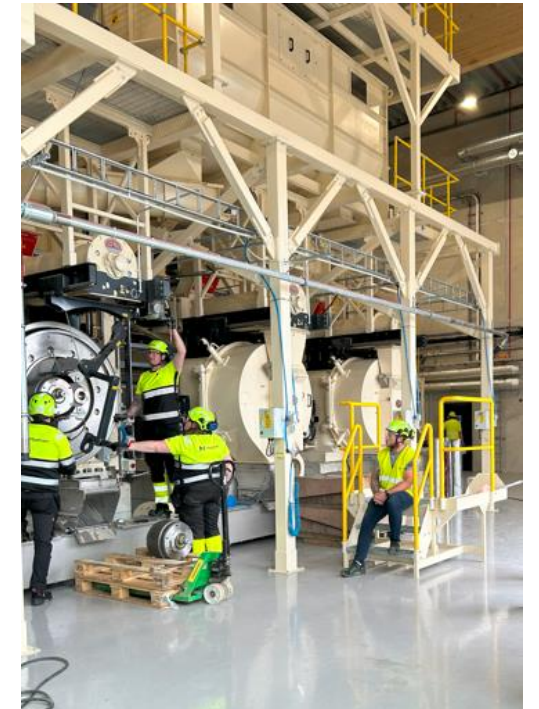


## SITE MANAGER

- Organisation and training of 6 operators, 1 Engineer
- Raw material/logistics, prepare for start up in September
- Quality and certifications, Enplus A1 approved in December
- Equipment (outside the project), work loader, quality control
- Prepare all the routines, standard procedures and maintenance
- Responsible towards authorities outside the project and further on
- Responsible for the start up, 70% tests and 100% tests
- Safety and security responsible from start up
- Take over after the project when the tests started

# Who build the plant?

- Hekotek – Pelletplant
- Muhlboeck – belt drier
- AKJ Energitechnik – 12 mW Boiler
- NCC - concrete and building structures.



# Where are we – 2 months after officiell startup

- Started deliver pellets two weeks earlier than planned 😊
- Quality – ENplus A1 certification Dec. 2024, we had the ENplus quality already during the trial period 😊
- Capacity – produce as planned, we slowed down because the customers wasn't ready for our volumes so early 😊. But still the 100% is TBD
- Availability – more downtime than planned but still good enough. 100% test TBD
- Thermal energy – 100% test TBD
- Raw material – use more material than expected during start up
- Integration with the sawmill is an ongoing work every day



Thanks!

Questions?

Gunilla Pettersson  
Site Manager

Moelven Pellets AB

[Gunilla.Pettersson@moelven.se](mailto:Gunilla.Pettersson@moelven.se)

Phone: +46 730 205 965

[Moelven.se](https://www.moelven.se)

